

VILLAGE OF MANNVILLE

COPY

MUNICIPAL DEVELOPMENT PLAN  
BYLAW No. 2006 - 733

OF THE VILLAGE OF MANNVILLE, IN THE PROVINCE OF ALBERTA.

WHEREAS the purpose of this Bylaw is to establish a policy framework upon which the community will grow and change over time. The Municipal Development Plan is premised on the physical, economic, and social circumstances that the Village is operating within; and is also premised on the strategic visioning undertaken by Village Council and the Community in March 2006.

AND WHEREAS notice of intention of the Council regarding this proposed by-law has been sent by regular mail to all residents in the area as well as advertised in the local newspaper;

NOW THEREFORE, be it resolved that the Council of the Village of Mannville, in the Province of Alberta, does hereby adopt the Municipal Development Plan Bylaw No. 2006-733 for the Village of Mannville.

This bylaw shall come into force and have effect from and after the date of the third reading thereof.

READ A FIRST TIME THIS 11<sup>th</sup> DAY OF July, 2006.

Germaine Hill  
Mayor

S. Doobay  
Chief Administrative Officer

READ A SECOND TIME THIS 17<sup>th</sup> DAY OF July, 2006.

READ A THIRD TIME  
AND FINALLY PASSED THIS 17<sup>th</sup> DAY OF July, 2006.

VILLAGE OF MANNVILLE

Germaine Hill  
Mayor

S. Doobay  
Chief Administrative Officer

BEING A BYLAW OF THE VILLAGE OF MANNVILLE  
TO AMEND THE VILLAGE OF MANNVILLE MUNICIPAL DEVELOPMENT PLAN

**WHEREAS** Section 638 of the *Municipal Government Act* requires that all statutory plans adopted pursuant to the *Act* be consistent with one another, the Council of the Village of Mannville deems it appropriate to amend the Village of Mannville Municipal Development Plan, being Bylaw 2006-733, and amendments thereto, to ensure conformity with the provisions of the Village of Mannville - County of Minburn No. 27 Intermunicipal Development Plan, being Bylaw 2015-809,

**NOW THEREFORE** Under the authority of the *Municipal Government Act*, the Council of the Village of Mannville, in the Province of Alberta, duly assembled enacts as follows:

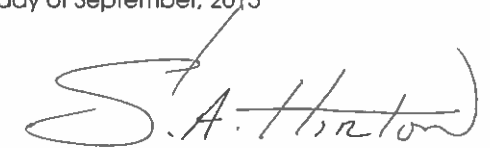
1. That Village of Mannville Municipal Development Plan Bylaw 2006-733 be amended as follows:
  - a. 'Figure 3 Future Land Use Concept' be deleted;
  - b. 'Figure 5 Potential Future Growth Areas: Staged' be deleted.
  - c. 'Figure 6 Future Concept Plan' be deleted;
  - d. 'Figure 4 Future Land Use Concept' be renamed 'Figure 3 Future Land Use Concept';
  - e. 'Figure 7 Parks Concept' be renamed to 'Figure 4 Parks Concept';
  - f. The List of Figures in the Table of Contents be revised in accordance with a through e above;
  - g. The place holding page 38 labelled Figure #5 Future Growth Staging be deleted;
  - h. The place holding page 39 labelled Figure #6 Future Growth Pattern be deleted;
  - i. That 14.2.1 and 14.2.2 be deleted and replaced with the following:
    - i. 14.2.1 *Future land use and urban expansion shall be consistent with the Village of Mannville - County of Minburn Intermunicipal Development Plan Bylaw 2015-809, as amended from time to time;*  
and
2. Should any provision of this Bylaw be determined to be invalid, then such provisions shall be severed and the remaining Bylaw shall be maintained; and,
3. That this Bylaw becomes effective upon the date of the final passing thereof.

Read a first time this 16<sup>th</sup> day of June, 2015

Public Hearing Held on the 20<sup>th</sup> day of July, 2015 held at the Village of Mannville, Alberta

Read a second time this 15<sup>th</sup> day of September, 2015

Read a third time and finally passed, this 15<sup>th</sup> day of September, 2015

  
\_\_\_\_\_  
Mayor

  
\_\_\_\_\_  
Chief Administrative Officer

**VILLAGE OF MANNVILLE**

**MUNICIPAL DEVELOPMENT PLAN  
BYLAW No. 2006 - 733**

**OF THE VILLAGE OF MANNVILLE, IN THE PROVINCE OF ALBERTA.**

**WHEREAS** the purpose of this Bylaw is to establish a policy framework upon which the community will grow and change over time. The Municipal Development Plan is premised on the physical, economic, and social circumstances that the Village is operating within; and is also premised on the strategic visioning undertaken by Village Council and the Community in March 2006.

**AND WHEREAS** notice of intention of the Council regarding this proposed by-law has been sent by regular mail to all residents in the area as well as advertised in the local newspaper;

**NOW THEREFORE**, be it resolved that the Council of the Village of Mannville, in the Province of Alberta, does hereby adopt the Municipal Development Plan Bylaw No. 2006-733 for the Village of Mannville.

This bylaw shall come into force and have effect from and after the date of the third reading thereof.

**READ A FIRST TIME THIS 11<sup>th</sup> DAY OF July, 2006.**

**PUBLIC HEARING HELD 17th July , 2006**

**READ A SECOND TIME THIS 17<sup>th</sup> DAY OF July, 2006.**

**READ A THIRD TIME  
AND FINALLY PASSED THIS 17th DAY OF July, 2006.**

**VILLAGE OF MANNVILLE**

\_\_\_\_\_  
Mayor

\_\_\_\_\_  
Chief Administrative Officer

# TABLE OF CONTENTS

<b>TABLE OF CONTENTS</b> .....	<b>2</b>
<b>PART 1 – PURPOSE &amp; CONTEXT</b> .....	<b>3</b>
<b>PART 2 – VISION &amp; KEY OBJECTIVES</b> .....	<b>7</b>
<b>PART 3 - GROWTH MANAGEMENT</b> .....	<b>9</b>
1.0    PLANNING AND ECONOMIC DEVELOPMENT STRATEGIES .....	9
2.0    COMMUNITY SERVICES .....	10
3.0    HOUSING STRATEGY .....	11
4.0    PROTECTIVE SERVICES.....	12
5.0    ENVIRONMENTAL SERVICES.....	13
6.0    INFRASTRUCTURE SERVICES .....	17
7.0    FISCAL STRATEGY .....	23
8.0    VILLAGE FORM AND DEVELOPMENT STAGING.....	24
<b>PART 4 – LAND USES</b> .....	<b>26</b>
9.0    RESIDENTIAL DEVELOPMENT.....	26
10.0   COMMERCIAL AND INDUSTRIAL DEVELOPMENT (BUSINESS) .....	28
11.0   PARKS, SCHOOLS AND OPEN SPACE.....	31
12.0   AGRICULTURAL AREAS.....	33
<b>PART 5 – IMPLEMENTATION</b> .....	<b>36</b>
13.0   HIERARCHY OF PLANS.....	36
14.0   INTERMUNICIPAL PLANNING .....	36
15.0   THE LAND USE BYLAW.....	37

## **LIST OF FIGURES**

1 Regional Context	Page 6
2 Infrastructure	Page 22
3 Land Use Concept	Page 34
4 Park Design Concept	Page 35
5 Future Growth Staging	Page 38
6 Future Growth Pattern	Page 39

## **PART 1 – PURPOSE & CONTEXT**

### ***PURPOSE***

The Municipal Development Plan (MDP) for the Village of Mannville (the Village) contains policies that are intended to influence a wide range of municipal issues and decisions. This plan is premised on the specific physical, economic and social circumstances that the Village is operating within. This plan is also premised on strategic visioning undertaken by the Community in March, 2006. This strategic visioning process set out the desired future of the Village and set a course that begins with establishing the policy framework around which the community will grow and change over time.

This plan sets out specific policies for the operation of core services in the Village. These policies are focused on specific categories of land uses that include: residential, commercial and industrial business, parks and open space, community facilities, as well as the design and provision of municipal and other services. These policies represent the “blueprint” for implementing development in the Village as it moves towards its desired future.

### ***CONTEXT***

The Village of Mannville is located in the County of Minburn #27, on the Trans Canada/Yellowhead Highway 16. It is 24 km west of Vermilion, 80 km west of Lloydminster, and about 170 km east of Edmonton. The Village was named after J.D. Mann, a contractor for the Canadian Northern Railway. The site of the Village was originally located 2 miles west of the present site and was moved in 1906. The first settlers to arrive in the area in 1899 traveled from Edmonton by oxen. On December 29, 1906 Mannville was incorporated as a village.

The Village is now a well established community, with industry based primarily on agriculture and oilfield activity. However, recent statistics show that the population of the Village of Mannville has been declining. This is consistent with national trends associated with rural depopulation as larger urban economic areas grow in relevance across the country and North America. In the case of the Village the 2001 population was 722 which represent a 4.7% decline from its 1996 population of 758.<sup>1</sup> A decline in local population is also consistent with a 2% decline in the County of Minburn. Alternatively, the population of larger towns in the area, including Vegreville (population - 5376), Vermilion (3948), Lloydminster (13,148) and Camrose (14,854), actually grew (0.7%, 5.4%, 16.2% and 8.2% respectively).

While the Village's overall population has declined, there are a number of positive indices that can be garnered by a review of the population of the Village. This would include the fact that the Village is on average a relatively young community. With an average age of 42, and 44% of the population being aged 24 to 64 this suggests that the community presents an attractive quality of life influences to some families. Also, the percent of population that are less than 20 is 31%, including 6.9% that are less than four. There are also some 25% that are between the ages of 65 and over. This implies a degree of stability as older adults remain or return to the community. Some recent immigration from other places in Canada is another positive indication. In setting out a plan for the Village these demographic considerations are important in helping define the nature of a community, and its desirability as a location to work, live and play.

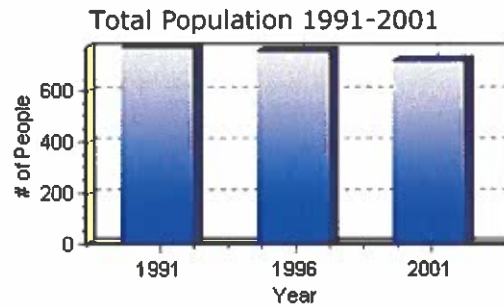
---

<sup>1</sup> <http://www.statcan.ca/start.html>. Community Profiles. Accessed: April 23, 2006.

**TABLE 1 DEMOGRAPHIC CHARACTERISTICS**

<sup>2</sup>  
Population

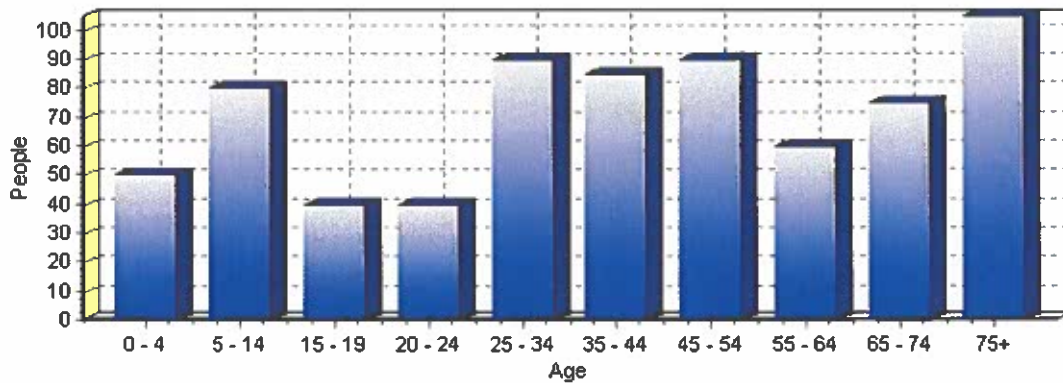
Total Population	
Population 2004*	722
Population 2003*	722
Population 2002*	722
Population 2001**	720
Population 2000*	758
Population 1996**	758
Population 1991**	774
Population % change 1991-1996	-2.11%
Population % change 1996-2001	-4.99%
* Source: Official Population List, Alberta Municipal Affairs	
** Source: Statistics Canada 1991, 1996, & 2001 Census	



Population by Age and Gender	1996		1996 Total	2001		2001 Total
	Male	Female		Male	Female	
Age 0 - 4	25	25	50	30	20	50
Age 5 - 14	55	45	100	45	35	80
Age 15 - 19	30	25	55	20	20	40
Age 20 - 24	30	25	55	15	25	40
Age 25 - 34	40	50	90	50	40	90
Age 35 - 44	55	35	90	40	45	85
Age 45 - 54	40	45	85	45	45	90
Age 55 - 64	30	35	65	30	30	60
Age 65 - 74	35	40	75	40	35	75
Age 75 and older	50	60	110	35	70	105
Total All Persons	370	390	760	350	370	720

Source: Statistics Canada 1996 & 2001 Census (numbers may not add up due to rounding)

Mannville Population by Age Group (2001)



<sup>2</sup> Alberta First Web Site. <http://www.albertafirst.com/profiles/statspack/20560.html>. Accessed, June 2, 2006.

**FIGURE #1  
REGIONAL SETTING**

## **PART 2 – VISION & KEY OBJECTIVES**

### ***MANNVILLE'S VISION***

On March 27<sup>th</sup>, 2006 a “Strategic Visioning” session was held in Mannville, Alberta. The purpose of the session was to engage the community in defining a future for the Village of Mannville – defining a ***Vision***. The session began by discussing with the Village the nature and purpose of Strategic Visioning. Through a process of Council and Community engagement the Village of Mannville has crafted the following Vision statement<sup>3</sup>.

***Mannville will be known as a safe, caring  
& attractive community. A great place to live  
with outstanding services & lots of opportunity.***

### **CORE SERVICES AND OBJECTIVES**

The Village's core services are determined in part through the roles of municipal jurisdictions outlined in the Municipal Government Act (MGA). The degree to which different jurisdictions provide these services, and how, may differ based on size, location, setting, history and more. In the case of Mannville, Alberta the objectives expressed through the Visioning process with the current Village Council, its administration and the community include the provision of quality services that are customer focused and cost effective. Specific service areas and objectives are illustrated in Table 2 below.

---

<sup>3</sup> See Village of Mannville, Strategic Plan (2006). Prepared by Eventus Consulting Group Ltd.

**TABLE 2 CORE SERVICES AND  
KEY OBJECTIVES**

<b>Core Service Areas</b>	<b>Key Objectives</b>
<p><u>Planning and Development Services</u></p> <p>Planning, Land Use &amp; Growth Management (planning, zoning, development, and building) Economic Development (land and marketing for the Village) Housing &amp; Land development</p>	<p><i>To effectively manage growth towards a sustainable community.</i></p> <p><i>To participate in land development and housing construction to the extent that it serves as a catalyst to further development within the Village of Mannville.</i></p>
<p><u>Community Services</u></p> <p>Parks, Recreation &amp; Culture (parks, playgrounds, indoor/outdoor recreation and theater)</p>	<p><i>To provide lifestyle amenities to the residents of Mannville.</i></p>
<p><u>Protective Services</u></p> <p>Fire and Emergency Medical Respondents (EMR) Bylaw Services &amp; Policing (municipal enforcement, pest control, animal control, RCMP)</p>	<p><i>To provide efficient delivery of protective services to all residents of Mannville recognizing the vital role these play in preserving the quality of life for residents.</i></p>
<p><u>Infrastructure Services</u></p> <p>Sewer, Water, Transportation Services and Snow Clearing, Grading, Road Maintenance Environment (recycling and waste management services)</p>	<p><i>To ensure that local infrastructure is maintained and enhanced.</i></p> <p><i>To encourage means of enhancing the Village of Mannville through initiatives and actions that are environmentally responsible.</i></p>
<p><u>Corporate Services</u></p> <p>Administration, Human Resources, Finance and Technology</p>	<p><i>To ensure the provision of a high level of customer service, sound fiscal management, the introduction of new technology and human resource practices that contribute to the greater good of the community.</i></p>

## **PART 3 - GROWTH MANAGEMENT**

The Village of Mannville is committed to a future that will see the Village grow as a thriving and caring community. The Village will be a well balanced community with varying housing forms, employment opportunities and a strong social and cultural fabric. As such the Village has determined to focus on the “Triple Bottom Line” business of Municipal Government.

The “Triple Bottom Line” means that the Village is committed to creating a positive business friendly atmosphere that creates local employment opportunities and generates a positive influence on the community’s tax base. It also means that the Village will encourage forms of housing that support the needs of varying age and income groups and that result in a more integrated community. Finally, this means the Village must also encourage the provision of amenities and services that serve the populace in a manner that preserves and enhances the environment.

### ***1.0 Planning and Economic Development Strategies***

#### **Perspective**

Town Planning and Economic Development are sometimes thought of as being on opposite sides of the development equation. Whereas town plans often serve to promote standards of development, economic development and marketing plans seek ways to bring business to the municipality with ease and in a way that makes the community an “attractive place to operate”. This sometimes requires that standards need to be flexible.

The Village of Mannville has taken the progressive view that planning and economic development must work hand in hand. The extent to which business may choose to locate in the Village may be determined in part by the location of the municipality, the amount of local traffic that travels through the Village, and the cost of land. With planning and economic development working together as a business unit the standards are not presented as barriers to development.

Rather they are presented, through marketing initiatives and through action, as opportunities to create and innovate how businesses choose to locate in the Village.

### Policy

- 1.1 The Village will create a flexible regulatory environment that encourages new development without unnecessarily burdening the municipality or its rate payers.
- 1.2 The Village will work collaboratively with the local Chamber of Commerce to market the Village as an amazing place to locate a business or raise a family.
- 1.3 The Village will seek opportunities to work with its regional neighbours to promote the region.
- 1.4 The Village will redraft its business licensing and land use bylaw mechanisms to reflect the objectives of the Village.

## **2.0 Community Services**

### Perspective

The term "Community Services" is most often thought of as those services that affect the "quality of life" of its residents. They include recreation and parks, education, health, fire and police services. These services are sometimes referred to as being "soft" services. That is, they are "soft" because establishing the level of service (LOS) for recreation, parks, and libraries is generally more difficult to attribute than it is for "hard" services. Hard services typically include such services as roads and utilities. Hard services are generally quantifiable through measurements such as the number of vehicles that a road can accommodate.

While there are hard components to soft services, such as buildings and equipment, the provision of these services may be the responsibility of the Village or they could be provided by private groups, other public agencies or even other levels of government (e.g. health). The role of the Village is to

determine which services are provided by other agencies, which services fall directly within municipal responsibility, and where gaps may exist. To the extent that gaps exist, the Village must ask the question - is this something the community needs and who is most appropriately equipped to provide this service?

#### Policy

- 2.1 The Village shall seek cooperation with public and privately operated education, health, social and cultural agencies to ensure that a high standard of community services are available to the residents of the Village and that the services provided are responsive to changing needs and funding sources.
- 2.2 In partnership with provincially funded programs, the Village shall continue to support social initiatives, programs and partnerships, which address social needs.

### **3.0 Housing Strategy**

#### Perspective

As a small urban centre within a primarily agricultural, or rural, setting the Village of Mannville is, like many small municipalities, seeing a stable to declining population basis. As rural "de-population" occurs the opportunity for the Village of Mannville is to cater to a retiring group of individuals that prefer the lifestyle of a smaller urban community. Providing a reasonable supply of housing options that includes senior accommodation, single family homes and various forms of multiple family housing are necessary to accommodate differing demographic groups.

It is the Village's intent to provide an aesthetically pleasing, convenient and safe physical environment for both residents and visitors to the area. The needs of all residents must also be considered when reviewing new development and redevelopment proposals. Future residential developments shall be evaluated and reviewed with the goal of encouraging energy efficiency, resource conservation and sustainability. New developments shall be encouraged to

provide access to technology and telecommunication infrastructure necessary to serve home based businesses.

#### Policy

- 3.1 Working with other governments, agencies, non-profit organizations and the private sector, the Village shall plan for a wide range of housing which meets the needs of various socio-economic groups, including seniors and young families.
- 3.2 The Village shall monitor housing development to evaluate whether housing needs are being met and should seek partnerships with housing developers to address specific needs as determined.
- 3.3 The Village encourages developers to establish innovative housing opportunities, which enhance interaction and communication, provide a sense of community and are pedestrian friendly.

### **4.0 Protective Services**

#### Perspective

The provision of protective services in the Village is provided through a complex series of relationships with the County of Minburn and the Provincial and Federal Governments. The Village should consider future locations of new fire halls and the timing associated with the provision of other protective services. These should be reviewed in collaboration with the County of Minburn based on growth within the Village and the County. A continuation and expansion of joint emergency service arrangements, which includes a unified system of fire protection and support, should be explored with area municipalities. A fully operational Emergency Operations Centre (EOC) must also be established. These initiatives should be considered within the context of a Regional Emergency Services Management Plan.

Police Protection is provided through contract with the Royal Canadian Mounted Police (RCMP). The RCMP is stationed in Vermilion, Alberta with police providing periodic visitations to the Village. The Village provides office space to the RCMP within the Village and the presence of RCMP within the Village should be

increased to ensure that residents feel the safety of local protection. The introduction of the “PROS” system in Police Cruisers may result in some improvements to local police presence. The Village may consider the potential to hire a Municipal Bylaw Enforcement Officer or to contract such services from another jurisdiction if available.

### Policy

- 4.3 Protective Services, including fire suppression, fire prevention, and emergency responder services, shall be provided by the Village to preserve and enhance the quality of life in the Village by providing an environment that is secure and safe for its residents.
- 4.4 Police Services shall continue to be provided by the RCMP and shall be encouraged to provide more regular visitations to the Village and operations out of the Village RCMP office.
- 4.5 Protective Services shall endeavour to address public concerns enhance public awareness, to educate residents with respect to the various roles and responsibilities in the provision of emergency services in the Village including community involvement.
- 4.6 The Village shall draft a Fire Control Bylaw to address fire safety, allowable controlled fires and fire bans in the community, and explore the feasibility of a “Regional Protective Services Plan” with its regional neighbours.
- 4.7 The Village shall strive to incorporate new fire prevention technologies into the community.

## **5.0 Environmental Services**

### Perspective

The settlement of communities creates significant impacts on the natural environment. In building a community consideration of the impacts of the building process must be taken into account. This includes an awareness of historical water courses that existed in the Village’s history, and that pose challenges to modern development.

In the case of the Village of Mannville, the community has indicated a strong desire to encourage greater recycling initiatives<sup>4</sup>. The Village has the opportunity to take up the leadership challenge of becoming an environmentally responsible community and setting itself up for substantial savings in the future. This will also position the Village to be a desirable place to live as more people recognize the benefits of living in a responsive community that accounts for the influence it has on the environment and does not simply ignore the fact. A proactive and aware community will lead to a greater community sense of responsibility and promote an attractive and healthy place in which to reside.

Certain land areas that are within the Village boundaries, owned by the Village, or adjacent the Village proper must be recognized for their environmentally sensitive nature. These should be retained in their natural state or protected from incompatible development. Lands identified as having environmental significance or hazardous properties should be identified and addressed in the preliminary planning stages, protected or permitted to continue to perform their natural functions. The Village must also ensure resources of a cultural or historical nature are preserved for the benefit of its residents and future generations.

## Policy

### **5.1 General**

- 5.3.1** The Village shall strive to be a leader in the areas of environmental preservation, waste reduction, recycling, water conservation, and other environmental initiatives.
- 5.3.2** The Village will encourage the use of best management practices and available technologies in managing the environment.
- 5.3.3** The Village shall promote regional initiatives that encourage the use of practices that minimize disruption to the natural environment

---

<sup>4</sup> In the most recent a recent poll (2005), 92% of Mannville voters expressed a desire to see enhanced recycling programs offered.

## **5.2 Natural Environment**

- 5.2.1** The Village shall endeavour to retain and improve the natural functions and habitats that exist within its Corporate Limits, and/or on lands owned by the Village, as well as improve the recreational and scenic qualities of natural areas.
- 5.2.2** No development other than parks shall be permitted to occur within the floodway of any water course.
- 5.2.3** Major drainage and water courses shall be protected from development, dedicated as environmental reserve and integrated into urban development in a manner which minimises disruption of natural drainage systems.
- 5.2.4** Parks development and operations shall be carried out in a manner which minimises the need for invasive action such as pesticide and herbicide spraying, utilizing natural forms of control wherever possible.

## **5.3 Waste Management and Recycling**

- 5.3.4** The Village shall prepare a Waste Management Plan to define and implement best management practices in recycling and waste disposal processes that meets the needs of the Village.
- 5.3.5** The Village shall continue to work with regional partners in surrounding municipalities and/or the private sector with respect to waste management .
- 5.3.6** The Village shall explore alternative waste management opportunities including local recycling, transfer sites, central recycling depots and shall evaluate options that result in a true cost accounting of the cost of waste management.
- 5.3.7** The Village shall support private and public sector initiatives in the development of environmentally friendly solid waste management projects or systems.
- 5.3.8** The Village shall promote waste reduction through public education, recycling and composting programs and by-law controls.
- 5.3.9** The Village shall encourage development proponents to demonstrate the environmental benefits of proposed developments and illustrate how the proposed development

contributes to community health, utilise environmentally sound practices and conserve resources.

#### **5.4 New Development Areas**

- 5.4.1** Areas proposed for new development shall be accompanied by an Environmental Impact Assessment (EIA).
- 5.4.2** Areas proposed for new development shall be accompanied by an Environmental Site Assessment (ESA-Phase 1) and any follow up measures (ESA-Phase 2 and 3).
- 5.4.3** Areas proposed for new development shall be subject to provincial review for identification of historically or culturally significant sites.
- 5.4.4** All development shall respect and maintain the integrity of local streams and watercourses.
- 5.4.5** All new developments shall be required to regulate and control surface runoff during and following construction and shall include the incorporation of treatment for storm water run off designed to improve the quality of the runoff entering the receiving body.
- 5.4.6** Subdivision and development is encouraged to minimise the amount of road required to service a given area.
- 5.4.7** Energy efficient design and construction techniques are encouraged in all structures including the incorporation of water saving devices and fixtures.
- 5.4.8** Innovative housing design which reduces total energy demand, material and land requirements is encouraged.
- 5.4.9** Special setback requirements from high pressure pipelines or substations shall be respected and incorporated into subdivision design and new development is encouraged to incorporate existing facilities into the design rather than requiring relocation of the facility.
- 5.4.10** Developers are encouraged to orient development sites to take advantage of winter sun in order to reduce the cost of heating.

- 5.4.11 Landscaping should be undertaken in a manner that provides natural cooling during summer months and protects development from prevailing winds.

## **6.0 Infrastructure Services**

### Perspective

Infrastructure within the Village of Mannville can be described as fitting into three categories. These include, firstly, utilities provided by private companies that include power, cable and gas. These “shallow” utility companies pay a franchise fee to operate within the Village and are contracted by landowners and private developers to extend services as development proceeds. These private companies often work with each other in the sharing of line assignments and rights-of-way. Private utilities co-operate with the Village in reviewing subdivision and development plans in the early planning stages to ensure sufficient capacity exists in service lines to accommodate growth.

The second type of infrastructure are those provided by the Village itself such as the water supply system, the sanitary sewerage system, storm and municipal waste. The urbanization and development of land results in changes to natural drainage systems, thereby increasing the amount of overland flow during rainstorms. Capacity considerations need to be monitored and programs put in place that allow for the expansion of Village facilities in concert with growth. Adequate mitigation measures must also be instituted to reduce the negative impacts on the natural and built environment.

Finally, transportation systems consisting of a hierarchy of roads within the Village and connecting to the Provincial road network (Highways 881 and 16) are the third type of infrastructure. An efficient transportation system is crucial to the mobility of a community’s residents and is critical in making a community a desirable place to live and work. The Village controls local roads and lanes which connect the secondary and primary highways. Control over roads outside its boundaries are limited and co-operation with other authorities is necessary to ensure that everyone benefits from the regional road system. In addition, increasing public awareness in the environment as well as increased emphasis

on leisure activity requires that pedestrian pathway systems be incorporated into transportation corridors where reserve and open space is not available for that purpose.

## Policy

### **6.1 Shallow Utilities**

- 6.1.1** All new development areas shall be required to be serviced by all utilities including municipal services and private utilities.
- 6.1.2** Generally, all new development shall incorporate underground services into the design.
- 6.1.3** Special setback requirements from high pressure pipelines or substations shall be respected and incorporated into subdivision design, and new development is encouraged to incorporate existing facilities into the subdivision design.
- 6.1.4** Utility companies are encouraged to maximise utilisation of rights of way and service trenches. Facilities shall be creatively designed and located to provide linear open space connections and be as inconspicuous as possible.
- 6.1.5** The location of shallow utilities is to be identified at the earliest possible time in the planning process and the Village shall strive to ensure that utility easements and rights of way are located in a manner which maximises use and enhances the opportunity for the rights of way to complement the open space system.
- 6.1.6** Developers shall be solely responsible for the installation of services to municipal standards necessary to service their development. Oversizing of utilities with cost recovery may be required to facilitate future development.
- 6.1.7** The Village should establish an off-site levies bylaw and schedule to ensure that contributions to trunk services are established for development agreements when required.
- 6.1.8** The sizing of sanitary sewer and water facilities shall be based on the ultimate patterns of development within the various catchment and pressure zone areas. Consideration for continuous development shall be designed for.

**6.1.9** No new development shall be permitted until such time as utilities and transportation facilities can be provided in an adequate and cost effective manner or unless all costs associated with the provision of such services are borne by the landowner.

**6.1.10** New development shall not be allowed on lands that are not contiguous to existing development.

**6.1.11** Utility rights-of-way and public utility lots shall be provided at the time of subdivision.

## **6.2 Storm, Water, and Sanitary Services**

**6.2.1** Direct runoff into existing water bodies from new developments shall not be permitted.

**6.2.2** All developments shall be required to institute measures to restrict flow and siltation in a manner suitable to the Village and Alberta Environment.

**6.2.3** New developments shall install storm water retention facilities as a means of preventing direct drainage to existing watercourses. Stormwater lakes shall be dedicated as public utility lots.

**6.2.4** Stormwater retention sites shall be designed to enhance open space and its usage as well as to avoid water stagnation problems.

**6.2.5** The location and need for snow storage facilities should be addressed through a storm water management plan and areas should be provided through the planning process.

**6.2.6** The Village shall explore and, where deemed appropriate, encourage the use of naturalised wetland and wet pond areas as treatment for storm water in new development areas.

**6.2.7** Commercial and Industrial developments shall treat all storm water originating on site to Village servicing standards.

## **6.3 Transportation and Roads**

**6.3.1** The overall transportation network within the Village, identified on Figure 2, shall be maintained.

- 6.3.2** The Village shall ensure that the development of transportation facilities is co-ordinated with the development of new areas and address the location, type and intensity of the land uses and density or distribution of the population.
- 6.3.3** The planning, design and construction of all major roadways shall be undertaken in a manner to minimise the effects of noise, fumes and traffic hazards on existing and future residential development. Emphasis on community well being and aesthetics is encouraged in addition to standard engineering requirements.
- 6.3.4** The School Board is encouraged to consider the movements of school buses adjacent to residential areas and within individual school sites when making requests for new sites.
- 6.3.5** The Village shall maintain a standard of roadways appropriate to the intended use. Variation of Village standards may be approved in circumstances provided supporting documentation is submitted to justify the proposed changes and where the changes complement the development of a unique community.
- 6.3.6** Land requirements for major arterial roadways, highways and required interchanges, shall be protected.
- 6.3.7** The Village shall work cooperatively with the County of Minburn to protect road allowances for future expansion of the Village.
- 6.3.8** All new developments are expected to provide adequate off-street parking.
- 6.3.9** Road rights-of-way should make provision for landscaping, tree planting and walkway or pathway systems. Pathways form part of the overall transportation system and therefore shall be dedicated as part of the road rights-of-way. Roads and pathways should be constructed simultaneously.
- 6.3.10** The Village shall develop and maintain a sign Bylaw which co-ordinates and controls the development of commercial advertising signs and structures on lands bordering provincial highways and arterial roads. Any advertising which is approved should be in keeping with a co-ordinated theme which enhances the Village's image.
- 6.3.11** The Highway 16 Corridor adjacent to the Village of Mannville should be evaluated with the goal of enhancing

the appearance of this corridor in conjunction with the Province and the County of Minburn.

- 6.3.12** The Village of Mannville shall review its traffic control bylaw to meet with the objectives of this plan and to enhance community safety within the community.
- 6.3.13** New residential developments should be concentrated away from existing and proposed major transportation route.
- 6.3.14** Where necessary, new developments shall incorporate berms, fencing, landscaping or a combination of all three in order to mitigate excessive noise levels.
- 6.3.15** Developers are encouraged to incorporate design features into neighbourhoods and individual buildings which reduce the impact and broadcast of excessive noise levels.

**FIGURE #2**  
**INFRASTRUCTURE**

## **7.0 Fiscal Strategy**

### **Perspective**

The ability of the Village to provide services to its residents is directly linked to its revenues and its management of municipal finances. Day to day operations and funding for major capital projects must be generated from sources including the municipal tax base, government grants, development levies and user fees.

It is the intent of the Village to maintain a balanced financial position so that its citizens and businesses are not unduly taxed in the present and future for the provision of required municipal services. New development should not result in long-term costs to the community and must support itself in terms of initial capital expenditures. The Village manages development to the extent that it is self-sustaining in terms of capital and operating expenditures and provides a balance between the residential and the non-residential tax base.

### **Policy**

- 7.1** The Village shall manage its debt servicing costs in accordance with the Municipal Government Act.
- 7.2** Proponents of new development shall prepare and submit fiscal information to demonstrate that the long term fiscal implications of proposed development on the Village are evaluated.
- 7.3** The Village shall facilitate the allocation of land uses and future growth in a fashion that leads to a fiscally balanced community and shall liaise with other levels of government to fully capitalise on available funding programs and grants while seeking to achieve financial independence in terms of capital expenditures.
- 7.4** Local groups and organizations shall be encouraged to take an active role in raising funds and supporting the operation of community facilities.
- 7.5** The initial cost of roads, sidewalks, water, sewer, sanitary and shallow utility requirements in new development areas shall be borne by the proponent of such development and in accordance with Section 6 of this Plan.

- 7.6 The Village shall promote the growth of its industrial, commercial and public sectors of the Village's economy.
- 7.7 The rate and location of future growth shall maintain a balance between public demand for services and overall fiscal capacity of the Village.

## **8.0 Village Form and Development Staging**

### Perspective

The Village of Mannville intends to maintain a concentric form of growth, with the Downtown as the geographic centre, as the most efficient and logical means to promote a sustainable and "whole" community. The Village intends on ensuring that growth and expansion in all growth areas occurs in an efficient, orderly and economic fashion. Ideally, this would mean development would occur in a contiguous manner in close proximity to existing development and major services. Non-residential growth should occur generally south of the Village with residential growth occurring in the west, east and north.

### Policy

- 8.1 All lands proposed for development shall be required to follow the "Hierarchy of Plans" process outlined in Part 4 of this Plan before subdivision or development may occur.
- 8.2 Future development shall be permitted only in locations that can be accommodated by logical extensions of the municipal infrastructure, and that follow a logical sequencing of development.
- 8.3 Future development areas shall be subject to Area Structure Plans or Outline Plans, undertaken by the Village or its delegates, when deemed appropriate to ensure the continued supply of land in accordance with this Plan.
- 8.4 The Village shall maintain a supply of serviced land in each major land use category to accommodate short-term growth.
- 8.5 The Village shall ensure the provision of a long term land supply in each major land use category within its municipal boundaries.

- 8.6 The Village may consider development "out of sequence" provided the developer agrees to front end the full costs of extending services to a particular area.

## **PART 4 – LAND USES**

### ***9.0 Residential Development***

#### Perspective

Residential development has a direct bearing on the level of satisfaction of existing residents and the ability of the community to attract new residents. Residential development also has a major impact on a community's finances. The ability of the Village of Mannville to maintain a reasonable level of services in an efficient manner is critical to the long term future of the Village. Future residential development, therefore, should occur in accordance with financial, environmental and social policy goals established elsewhere in this Plan.

Presently, the built form of the Village is relatively contiguous and built out at a density of about 4 units per acre with population limited to about 2 persons per unit, on average. As a sustainable community, that considers the changing nature of work, an ageing population and the trend towards "urbanization", the Village recognizes that the density, style and type of residential development that are in demand are changing. The opportunity exists for the Village to provide housing options which provide identity for and enhance the desirability of it as a community.

A wide range of housing opportunities shall ensure that the Village becomes a "whole" and balanced community, both socially and economically. Affordable housing opportunities shall serve to make the Village a more attractive choice for business and industry and families. The Land Use Concept (Figure 3) illustrates areas suitable for residential land uses.

#### Policy

##### **9.1 General**

- 9.1.1** In keeping with the Village's fiscal, environmental and land use goals, overall density for residential land uses shall range from 6 to 9 units per net developable acre.

- 9.1.2 In co-operation with developers, the Village shall endeavour to ensure that a supply of serviceable residential land is available.
- 9.1.3 A high standard of visual amenity shall be incorporated into all new development areas by capitalizing on varied visual impressions produced by such features as road configuration, integrated open space, sensitive use of building materials, or colours, landscaping and architectural styles.
- 9.1.4 Housing developments that provide a range of lifestyle, including seniors housing and young families, and work alternatives are encouraged.
- 9.1.5 The Village should prepare a set of guidelines regarding the planning and development process to ensure effective communication and clear expectations with the public and private companies.

## **9.2 Design Intent**

- 9.2.1 The Village shall seek to provide a flexible mixed housing stock which accommodates all ages (e.g. seniors).
- 9.2.2 All developments are encouraged to incorporate high quality and durable materials in exterior finish which minimise long term maintenance.
- 9.2.3 Developments that incorporate lanes, laneless subdivisions, and alternate subdivisions forms are encouraged.
- 9.2.4 Suitable sound attenuation devices shall be required in areas where residential development is located adjacent to major arterial roadways or railway lines and creative solutions to sound attenuation which complement the aesthetics of an area are encouraged.
- 9.2.5 The range, style and type of single dwelling development shall be approved in Area Structure Plans or Outline Plans.

## **9.3 Density**

- 9.3.1 Area Structure Plans and Outline Plans shall demonstrate sensitivity to established residential areas with regard to style and density.

**9.3.2** Low Density Housing on lots of varying sizes are encouraged within comprehensively designed development areas and shall take into account location, servicing capacity and the development of a socially cohesive community.

**9.3.3** Higher Density Housing development is encouraged to develop as part of the comprehensively planned neighbourhoods and in a manner that blends with, and enhances surrounding land uses.

#### **9.4 Affordable Housing**

**9.4.1** Affordable housing developments are encouraged to take the form of multi-unit complexes, attached housing or suites so as to capitalise on energy efficiencies and reduce land consumption. Such housing shall be designed to blend into the overall streetscape.

**9.4.2.** The Village shall encourage multi unit high density development to locate in proximity to shopping facilities, institutions, parks or open space.

**9.4.3** In collaboration with the Province, the Village should allow the development of basement suites in existing areas.

**9.4.4** The Village shall continue to maintain the Mannville Housing Authority as a means of encouraging housing development within the Village.

### ***10.0 Commercial and Industrial Development (Business)***

#### **Perspective**

Within the Village of Mannville, commercial/industrial land uses have three primary subsets including the Central Business District (Downtown), the Regional Commercial Business District (Regional) and the Industrial Business Park. These groups have their own particular development characteristics and location criteria which differentiate the uses allowed in each of them.

The Downtown area is intended to function as the primary commercial and business sector of the Village and represent "the heart" of the community. Main uses encouraged in this area are retail trades; offices; personal services; entertainment cultural, and restaurant facilities; public and government

operations; major business activities intended to serve the local resident trade area requirements; and residences as secondary uses to the primary commercial activities. The Highway area is intended to function as a service area for the Village, the Region and the travelling public. Main uses encouraged in this area are service stations; restaurants; and regional retail stores. Industrial Business uses, such as warehouses, light manufacturing, storage, and offices, shall be directed to the lands in or adjacent to the existing industrial park in the south and east of the Village. Together these three districts will be designed to function as a "Regional Employment Centre".

## Policy

### **10.1 Central Business Development (Downtown)**

- 10.1.1** The Village should prepare a plan for the Downtown that includes detailed design guidelines, planned streetscape upgrades and other actions that will encourage creative development opportunities within the Downtown.
- 10.1.2** The Village shall ensure that an adequate traffic circulation pattern for vehicles and pedestrians is maintained within the Downtown.
- 10.1.3** Rear service lanes should be incorporated to provide access to parking, delivery and loading areas.
- 10.1.4** New developments in the downtown shall be encouraged to incorporate residential space as a secondary use on second and third floors.
- 10.1.5** Within the downtown area, the use of existing housing stock for suitable commercial uses, should be considered as an appropriate transitional use.
- 10.1.6** A destination park space located at the terminus of 50<sup>th</sup> street should be planned as a central people destination place in the downtown (Figure 4).

### **10.2 Regional Commercial Development (Regional)**

- 10.2.1** Regional Commercial land uses (directly related to or dependent upon the travelling public) shall be limited to those areas adjacent to Highway No. 16 as shown in Figure 3.

- 10.2.2 Access to all sites shall be via existing or approved service roads intended to service the Highway Commercial area.\
- 10.2.3 The architecture, landscaping, signage and lighting of Regional Commercial developments shall be strictly controlled to enhance the appearance of the community from the Highway.
- 10.2.4 Buffering shall be provided between Regional Commercial and residential land uses to prevent possible conflict due to noise, hours of operation, or detrimental visual impact.

### **10.3 Industrial Business Park Development (Industrial)**

- 10.3.1 At the Area Structure Plan or Outline stage, where different categories of Industrial uses are contemplated, these shall be clustered in distinct cells, rather than as homogeneous industrial tracts.
- 10.3.2 Industrial areas shall be provided with direct linkages to major transportation routes.
- 10.3.3 The Village shall ensure the adequate provision of pedestrian and vehicular links from residential areas to industrial development.
- 10.3.4 Industrial development should incorporate open space and amenity areas for the benefit of the employees, and sidewalks or pathways should be included to allow access to all sites from the community.
- 10.3.5 Industries which may be considered offensive by virtue of noxious emissions, noise, vibration or outside storage may be restricted and may be required to incorporate certain measures to ensure the integrity of surrounding areas are not jeopardized.
- 10.3.6 Industrial development adjacent to existing or future residential areas shall be subject to special controls, including screening, buffering, fencing, or other mitigating measures, to ensure compatibility.
- 10.3.7 Industrial buildings visible from major transportation routes shall incorporate high standards of landscaping, lighting, signage, exterior finish and architectural interest.

- 10.3.8** Existing industrial land uses located in areas other than designated industrial parks shall be discouraged from expanding and encouraged to relocate to more suitable locations.

## ***11.0 Parks, Schools and Open Space***

### Perspective

Open Spaces shall be designed to ensure the provision of linkages to key destinations in the community including schools and centralized park and sport facilities. (Figure 3 and 4).

### Policies

- 11.1** The provision of pathways and local tot lots or playgrounds shall be provided in park concept plans within Area Structure Plans or Outline Plans.
- 11.2** Environmental Reserve (ER) shall be provided as required adjacent to and including major watercourses, drainage areas and sloped areas, and
- 11.3** Environmental Reserve (ER) land may be augmented with Municipal Reserve (MR) to ensure the open space is functional and continuous pathway systems can be constructed.
- 11.4** New development areas shall provide linear parkway systems, where possible linking school sites, recreation facilities and major open space areas to the rest of the community.
- 11.5** In accordance with the provisions of the Municipal Government Act (MGA) the Village of Mannville requires the full dedication of 10% of the Gross Developable Area (GDA) in Municipal Reserve (MR); cash-in-lieu of reserves will be accepted only in unusual circumstances.
- 11.6** Emphasis shall be placed on the provision of usable open space when dedicating credit Municipal Reserve (MR) and walkways which solely provide connections between streets and facilities, shall be provided as part of the road system or as Public Utility Lots.
- 11.7** All open space areas and facilities shall be designed to enhance the safety and security for the individual and the neighbourhood

using generally accepted principles of *Crime Prevention Through Environmental Design (CPTED)*.

- 11.8** Private open space and recreational facilities shall be encouraged to complement and augment the recreational facilities and open space areas provided by the Village
- 11.9** Where storm water retention facilities are provided, they shall be dedicated as public utility lots, designed to enhance open space and its usage, as well as to avoid water stagnation problems.
- 11.10** Portions of dry pond areas lying above the 1:20 year flood elevation may be eligible for Municipal Reserve (MR) credit provided the location, design and development coincide with the Village's open space needs.
- 11.11** All new developments or subdivisions shall consider the land requirements of the affected School Board in the development of their plans.
- 11.12** The Village and the School Board should work together to design school sites to maximize their benefit to all users, while providing for efficiencies in operation and maintenance.
- 11.13** Major entry points into the Village including Highway 16 and 881 should incorporate a higher level of landscaping and serve as attractive entries into the community.
- 11.14** The Village supports the preservation and enhancement of publicly and privately owned trees and their contribution to the community's health and appearance.
- 11.15** School sites may be revised from a Municipal Reserve (MR) designation to School Reserve (SR) or Municipal and School Reserve (MSR) upon demonstrated need for school sites.

## **12.0 Agricultural Areas**

### Perspective

The Agricultural nature of the economy of the Village and its historical links to the agricultural setting are important to the Village.

### Policies

- 12.1** The Village shall respect existing agricultural operations until such time that those lands are required for urban growth purposes.
- 12.2** Proposed urban development should address proximity issues to agricultural operations through appropriate setbacks and notifications.

**FIGURE #3  
LAND USE CONCEPT**

**FIGURE #4**  
**PARKS DESIGN CONCEPT**

## **PART 5 – IMPLEMENTATION**

### ***13.0 Hierarchy of Plans***

#### Perspective

The Municipal Government Act (MGA) sets out the Hierarchy of Plans.

- 13.1** When annexation of new lands occurs, the Village shall prepare a comprehensive plan for the annexed lands for incorporation into this Municipal Development Plan.
- 13.2** Area Structure Plans and/or Outline Plans shall be prepared by the Village, or by the developer/landowner, when authorized to do so by the Village, and shall be prepared in accordance with this plan.
- 13.3** Area Structure Plans and Outline Plans must promote the orderly and economic development of the Village.

### ***14.0 Intermunicipal Planning***

#### Perspective

It is clear that no municipality can exist or operate in isolation from its neighbours. Although cross-jurisdictional effects are often difficult to quantify, there can be no doubt that they are significant. It is believed that an attitude of cooperation amongst municipal neighbours and a broad perspective regarding economic and environmental health are of direct benefit to the Village itself. It is the purpose of this section to describe efforts that the Village of Mannville views as desirable to take with its regional neighbours to ensure effective and positive relationships.

#### Policy

##### **14.1 Coordination with the County of Minburn**

- 14.1.1** The Village shall maintain an open dialogue with the County of Minburn with regard to land use, transportation, infrastructure, recreation and environmental issues affecting both municipalities.
- 14.1.2** The Village should allow development to occur within the County in areas that have no negative impact towards the lifestyle and comfort of Village residents, future expansion of

the municipal boundaries, continuity of uses or municipal facilities and infrastructure.

**14.1.3** In consultation and co-operation with the County of Minburn the Village shall seek to incorporate lands within the Village boundaries which allow for a reasonable area for growth and development.

## **14.2 Future Land Use and Expansion**

**14.1.1** Development of lands within the current municipal boundary, are recognized as immediate infill opportunities to assist in achieving the policies of this plan.

**14.2.2** The Village shall explore growth options for the expansion of its municipal boundaries based on the objectives and policies of this plan and generally as shown on Figure 5 and 6 in Appendix A.

## **15.0 The Land Use Bylaw**

### Perspective

The Land Use Bylaw and the associated Land Use Map are important tools used in the implementation of the policies and standards of the Village Plan.

### Policy

- 15.1** Revisions to the Land Use Bylaw shall be undertaken to fully enact and enforce the policies adopted in this Plan.
- 15.2** In general, proposed resolutions considered by Council, applications for subdivision or development must be consistent with the land use policies set out in the Village MDP.

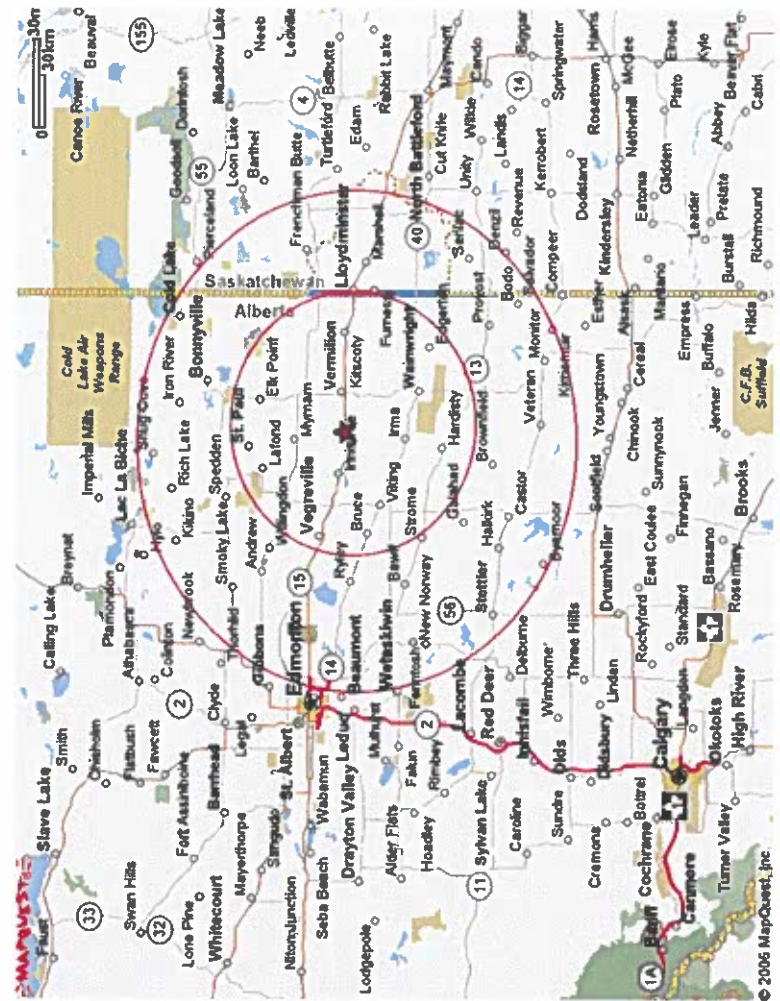
**FIGURE #5**  
**Future Growth Staging**

**FIGURE #6**  
**Future Growth Pattern**

Figure 1 – Regional Context



Mannville, Alberta (2006)



Mannville, Alberta and Regional Context (2006)

Figure 2 Infrastructure - Transportation

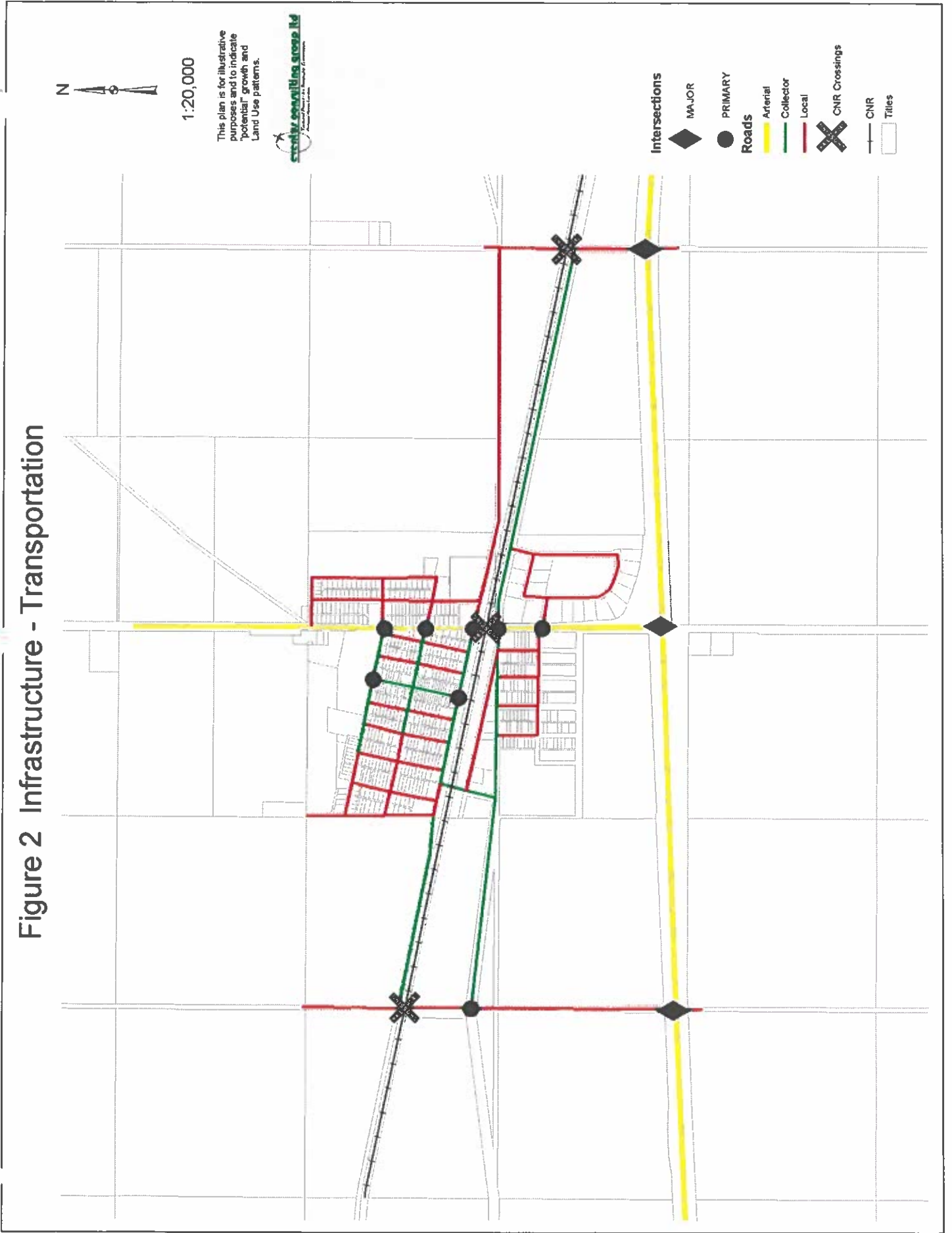


Figure 3 Future Land Use Concept

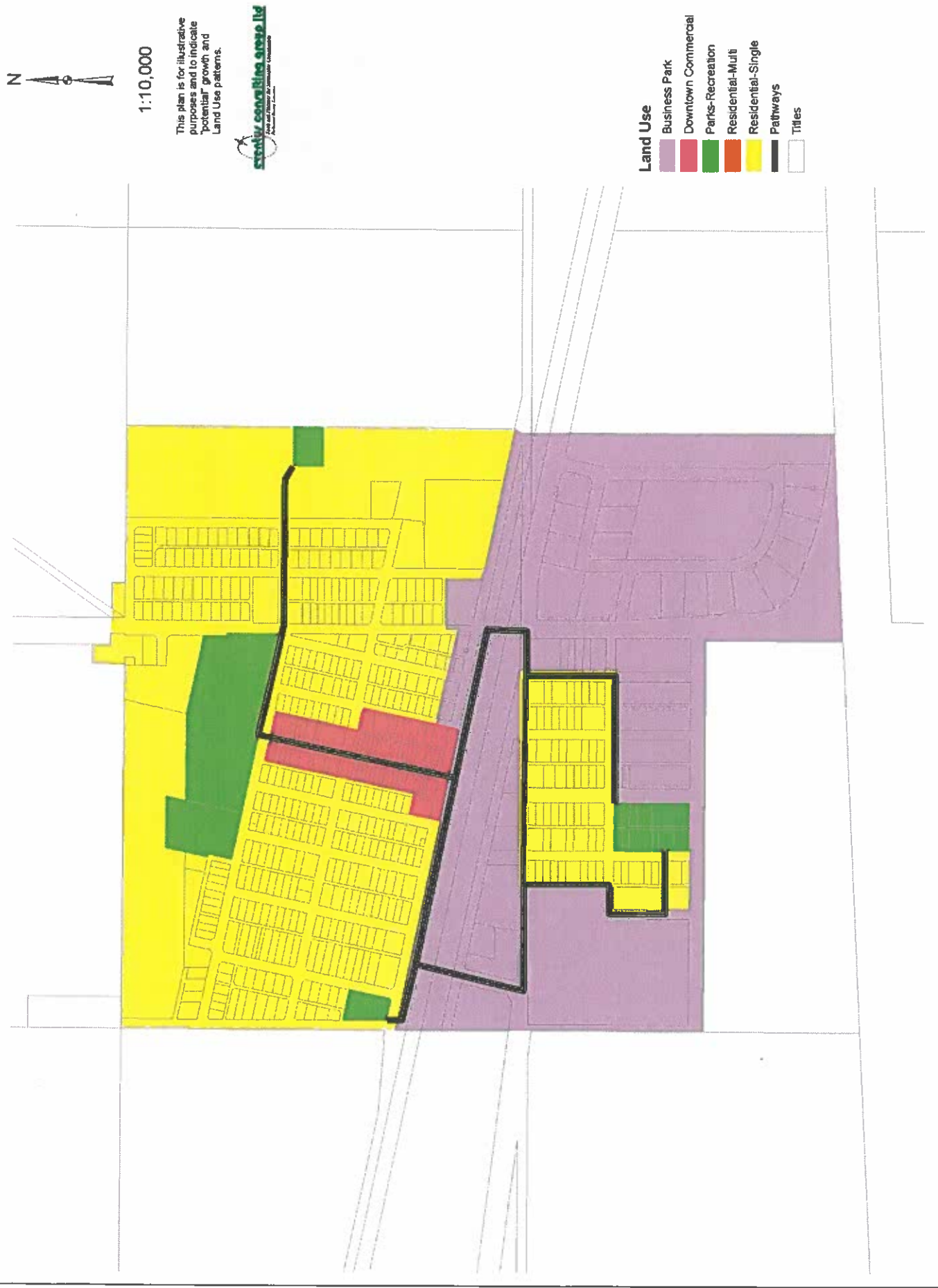


Figure 4 Future Land Use Concept

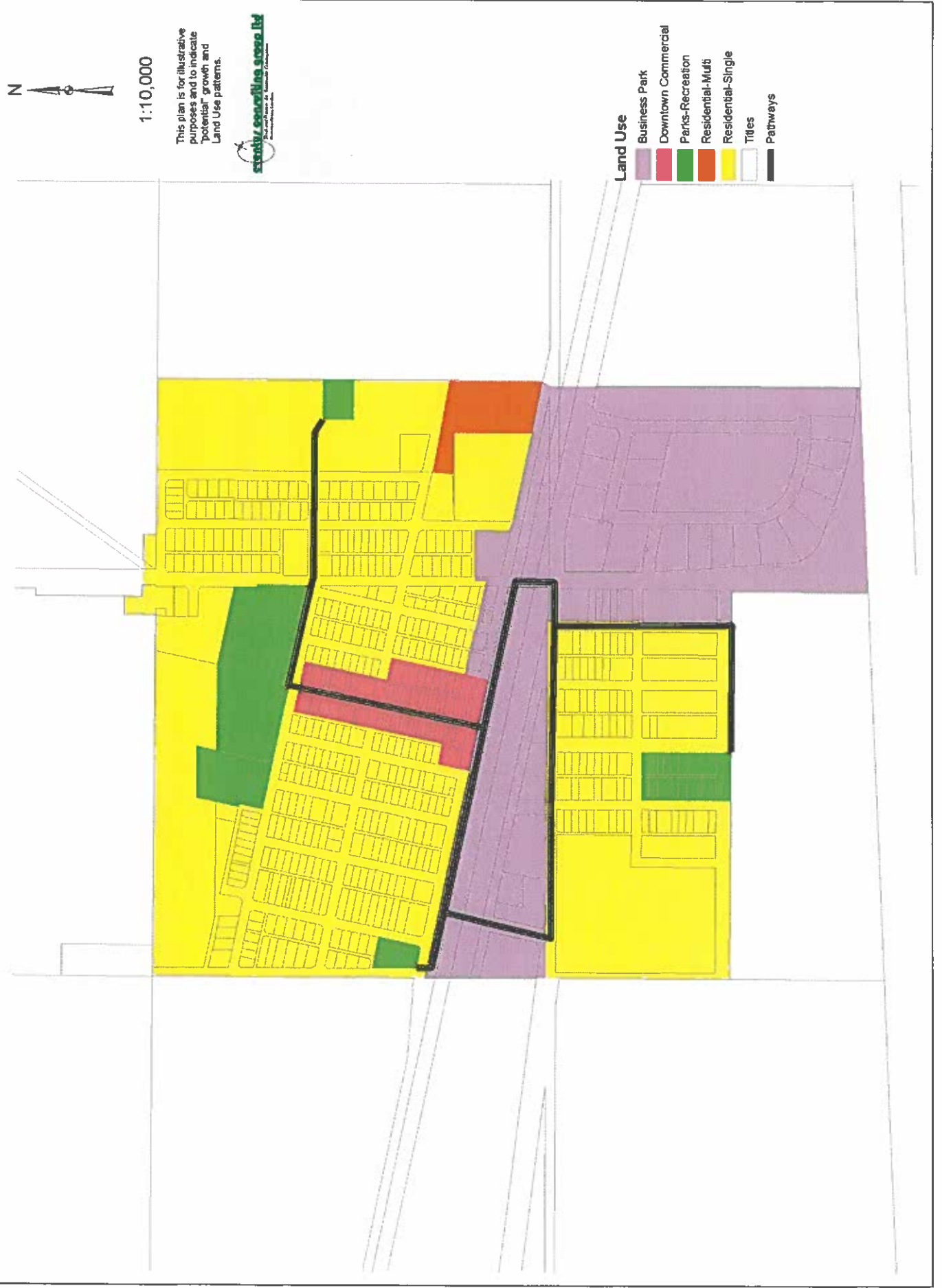


Figure 5 Potential Future Growth Areas: Staged

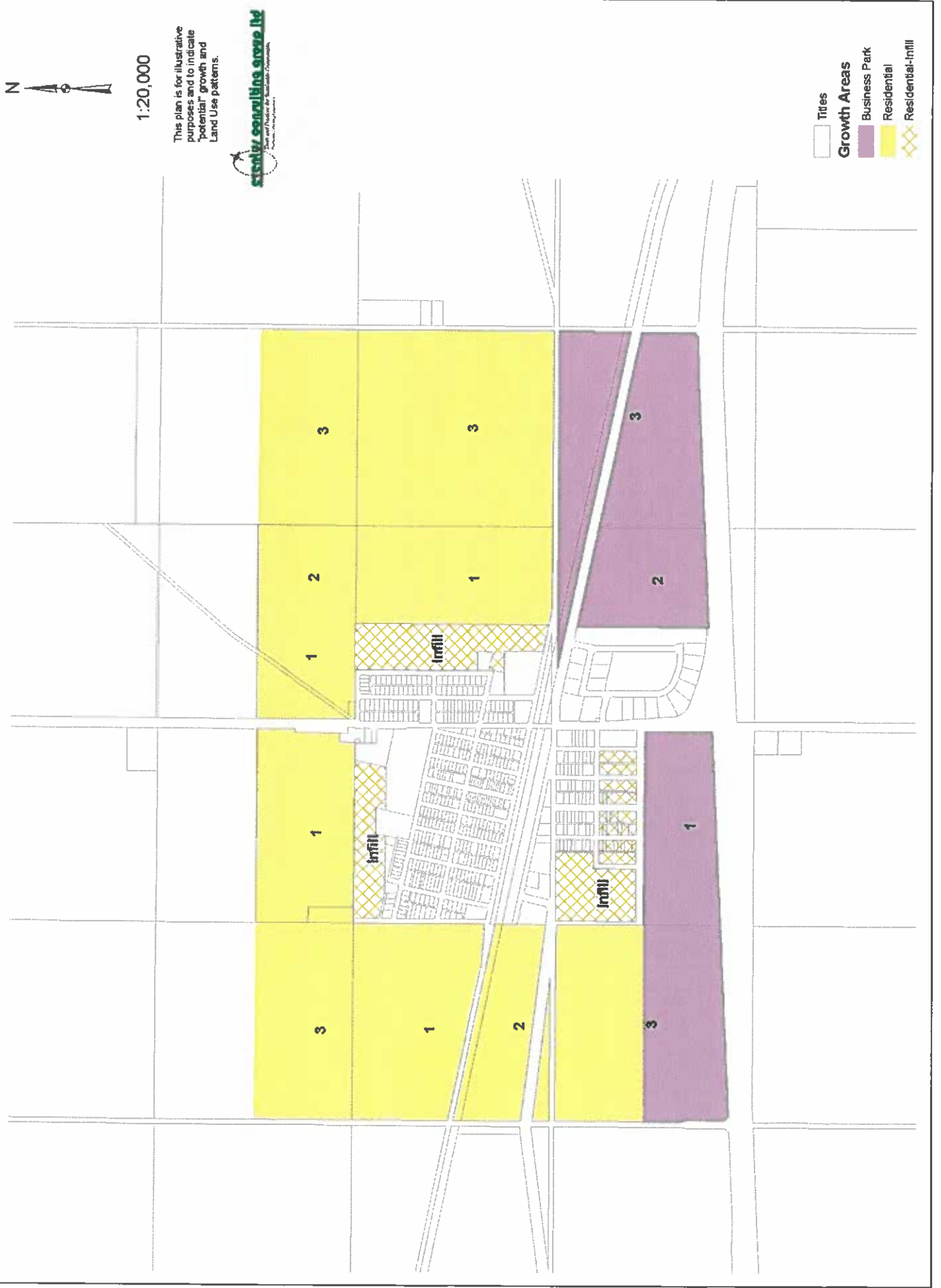
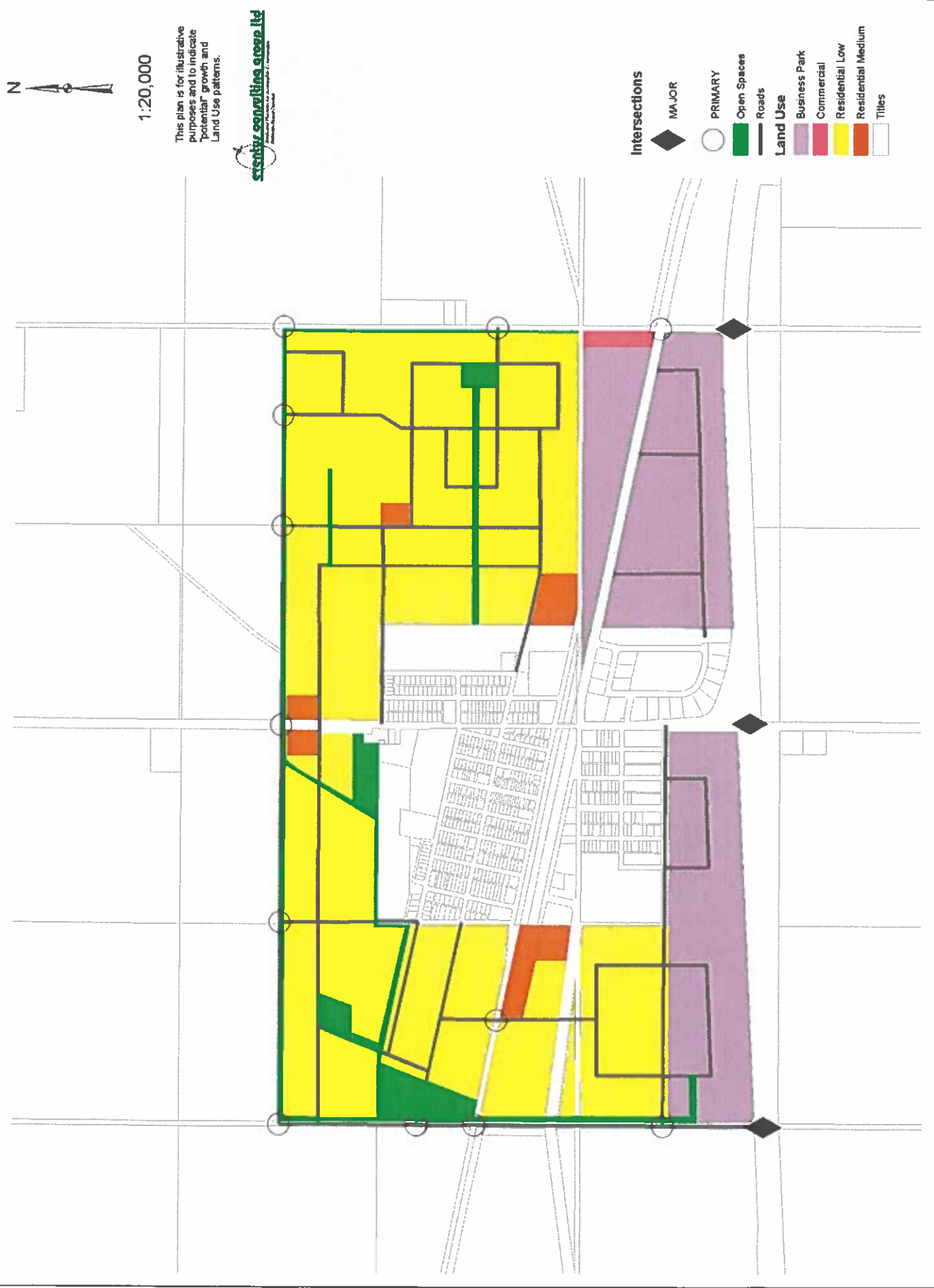
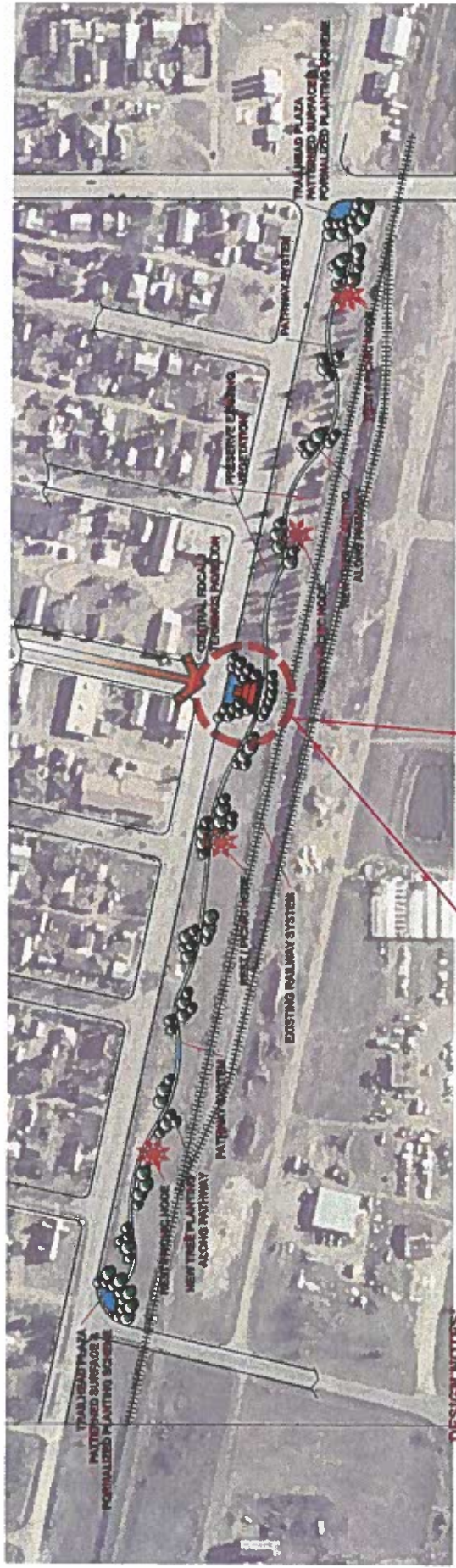


Figure 6 Future Concept Plan





**DESIGN NOTES:**

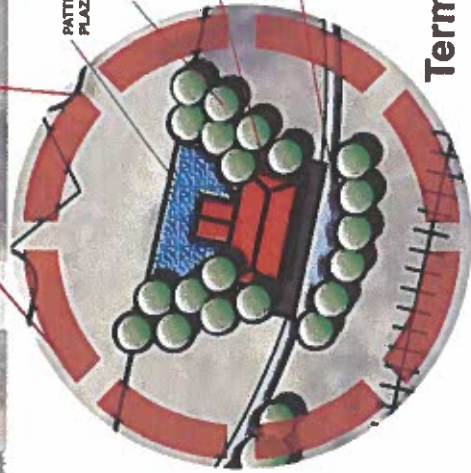
- LINER OPEN SPACE AND TRAIL SYSTEM
- PROVIDE REST / PIKING STOPS ALONG PATHWAY OPPORTUNITY FOR INTERPRETIVE NOOKS AT THESE LOCATIONS
- INTRODUCE NEW TREE PLANTINGS ALONG PATHWAY TO CREATE A WALK-THRU-THE-WOODS FEELING
- MAINTAIN EXISTING VEGETATION WHEREVER POSSIBLE
- PARK TO TAKE ON A TURN OF THE CENTURY RAILWAY STATION THEME - PATHWAYS TO EMULATE TRAIN TRACKS - FURNISHINGS AND SHELTERS TO IMBUE OLD STYLE RAILWAY STATIONS
- TRAILHEADS TO CREATE A SENSE OF ARRIVAL - PATTERNED SURFACES, FORMALIZED PLANTING SCHEME, REPLICA RAILWAY CROSSINGS

PATTERNED SURFACE PLAZA / APPROACH

FORMALIZED TREE PLANTING AND LANDSCAPING

PAVILION STRUCTURE TO EMULATE AN OLD STYLE RAILWAY STATION ON LOADING PLATFORM - INTERPRETIVE NOOK OPPORTUNITY

PATHWAY SYSTEM - SECTION OF TRAIL AT STATION TO EMULATE RAILWAY TRACKS - EMBEDDED TIES AND DECORATIVE SURFACE WORK



## Terminus Pavilion Enlargement

**eventus consulting group ltd**  
*Tools and Practices for Sustainable Communities*  
 Professional Planning Consultants

**L.A. West** design inc.  
 Landscape Architectural Design Consultants

**Mannville**

**Figure 7**  
 Parks Concept  
 July 2006  
 Not to scale

